

# THE HAY STACK

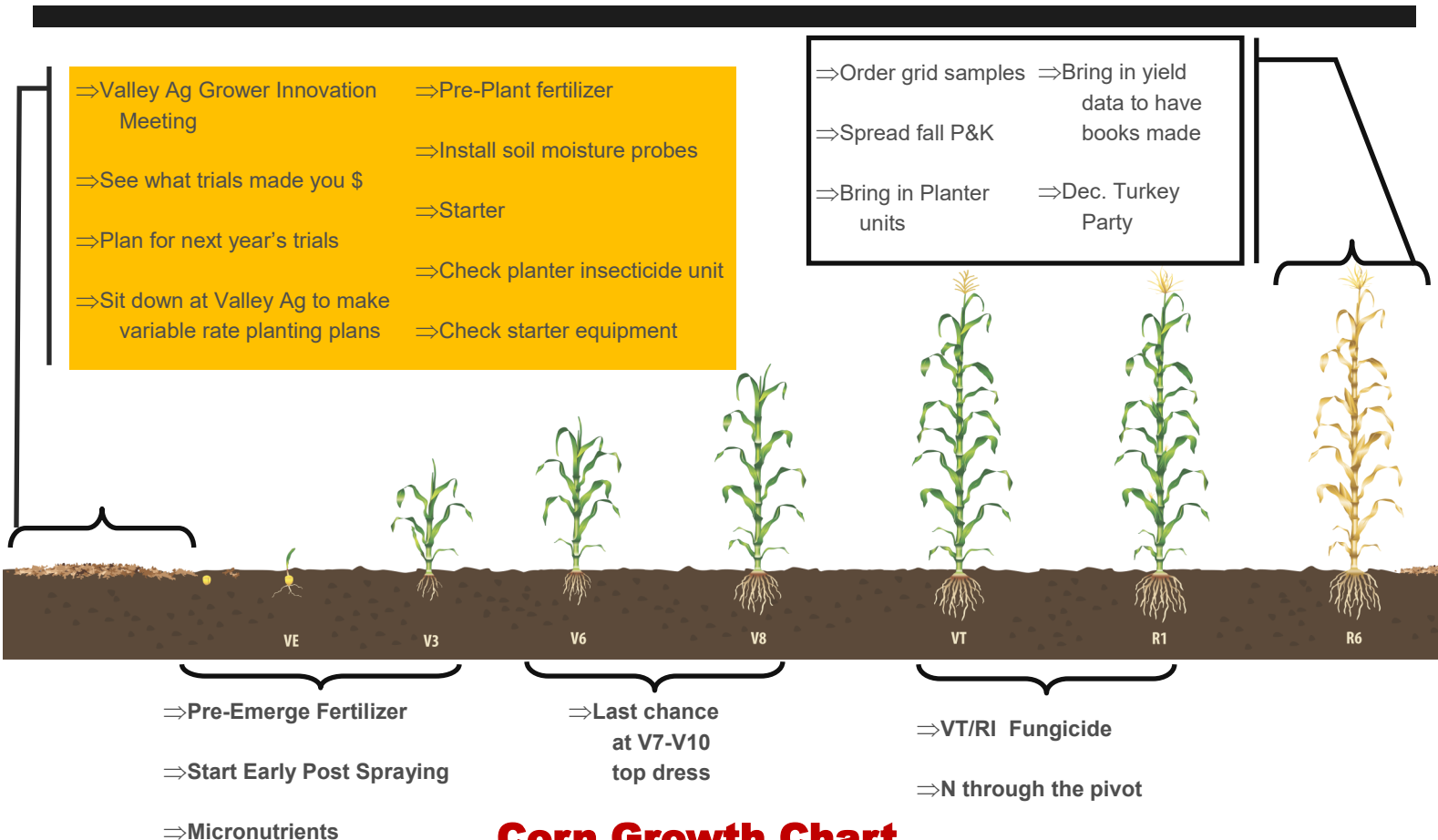
APRIL 2018

## Alan Moehring's Things to Consider BEFORE Planting...

- ⇒ Selecting the right hybrid for each field
- ⇒ Which order to plant hybrids
  - ◆ Dekalb 60-69 and Croplan 4895 are great hybrids, they just have poorer cold emergence plant when soils is warmer for better stand and yields
- ⇒ Seed treatments help germination in cold wet soils
- ⇒ Uneven emergence can lower yield
- ⇒ Soybeans not treated with insecticide and fungicide lose 16% of stand on average
- ⇒ Proper planting depth helps root develop properly leading to better water and nutrient uptake



We have corn, soybeans, and alfalfa on hand along with the knowledge to help make sure we are placing the right varieties for each field.



**Corn Growth Chart**

## From Greg's Desk

There is a lot going on in getting ready for spring around here. We have set up 2 new tender trucks so that we are ready for spring.

We are excited about our seed delivery for spring. DeKalb 59-50 did very well in many situations last year. We expected it to do well in dryland conditions, but were presently surprised to see it also do exceptionally well under irrigation. Croplan 4895 was a runner that did well in many places also.

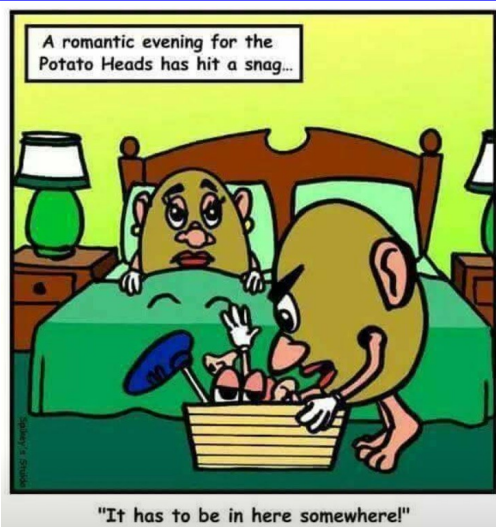
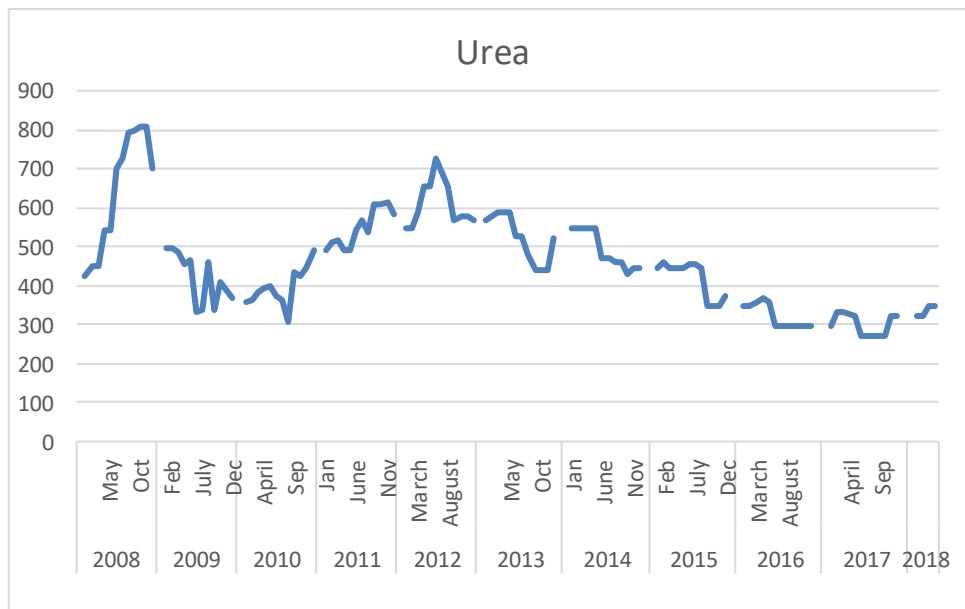
As for fertilizer, we have seen some crazy changes. Last August I was hearing that urea should stay low for a while. At that point some problems seemed to start.

Plant startup problems in Weaver IA, Texas and Enid. I had a sales person visit with me in fall saying he wanted to sell me tons out of Enid like in the past. When I called for a price, the plant was not running and he did not have a price! They were not producing yet. I hoped to have a bidding position between CF and Koch. I did get some tons out of Weaver eventually. The next problem was that importers have lost their rear end importing tons and then having the domestic plants start, creating a glut and low prices. You and I like the low prices but no one likes losing a bunch on a commodity.

I am starting to believe that China actually is working to clean up the environment! I did not believe this, but have been hearing for the last year that they have shut down half of their production. That would be the old coal fired inefficient plants. From what I understand, that is the urea that they exported. The half that they are still producing is the part that they use domestically. We have layered in tons for the year. As we have been bringing tons, we have sold them. I am hoping that we will see N drop, I just do not know when it will happen. When will we figure out how to turn on the plants and have them all producing? Top dress, fall or next winter?

Weather is stranger than the nitrogen market. We will be ready when things straighten up. Thanks for the work and lets all have a safe spring!

• *Greg Pirak*



### INSTALLING SPRING

50% ready



Installation failed  
Error 404: Spring not found  
Spring is not available in your state  
Please try Florida

# CHANGES IN 2018 PLANTING BY LEE PIRAK

Whether green, red or blue, we can assist you in the generation of prescription maps for your planter.

In the past, seed population variation was driven by any number of factors. Irrigated ground, soil types, elevation, soil nutrients, seed variety and any number of other items were used to define prescriptions.

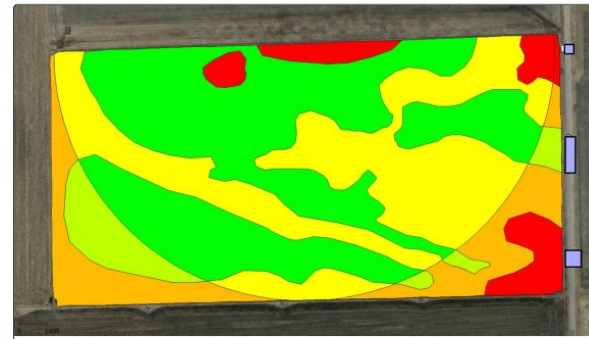
In an effort to refine our planting practices we have selected the following criteria: 1) the normalization of harvest data for three or more years and 2) satellite NDVI imagery along with satellite infrared imagery.

This methodology gives us a historic reference on which to build seed population subscriptions.

Whatever methodology you want to use, call us and we are ready to help you to make this a successful planting season.

## 2018 Planting Prescription

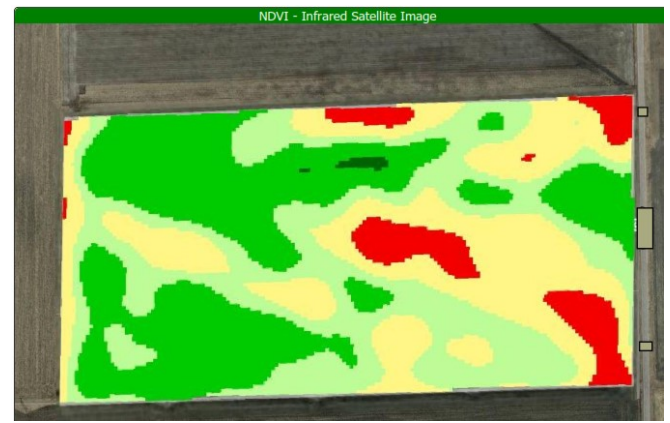
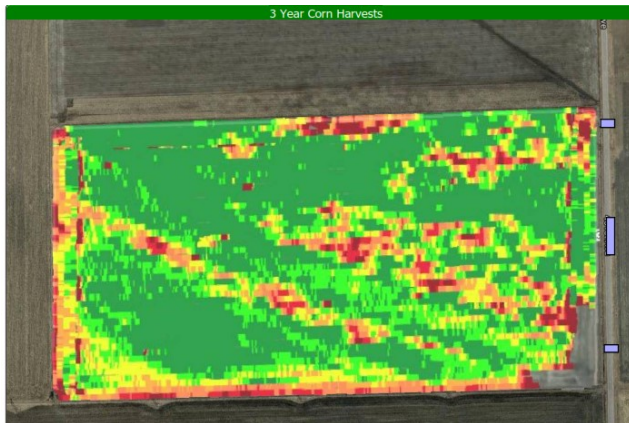
Using irrigated zones, harvest maps and satellite images



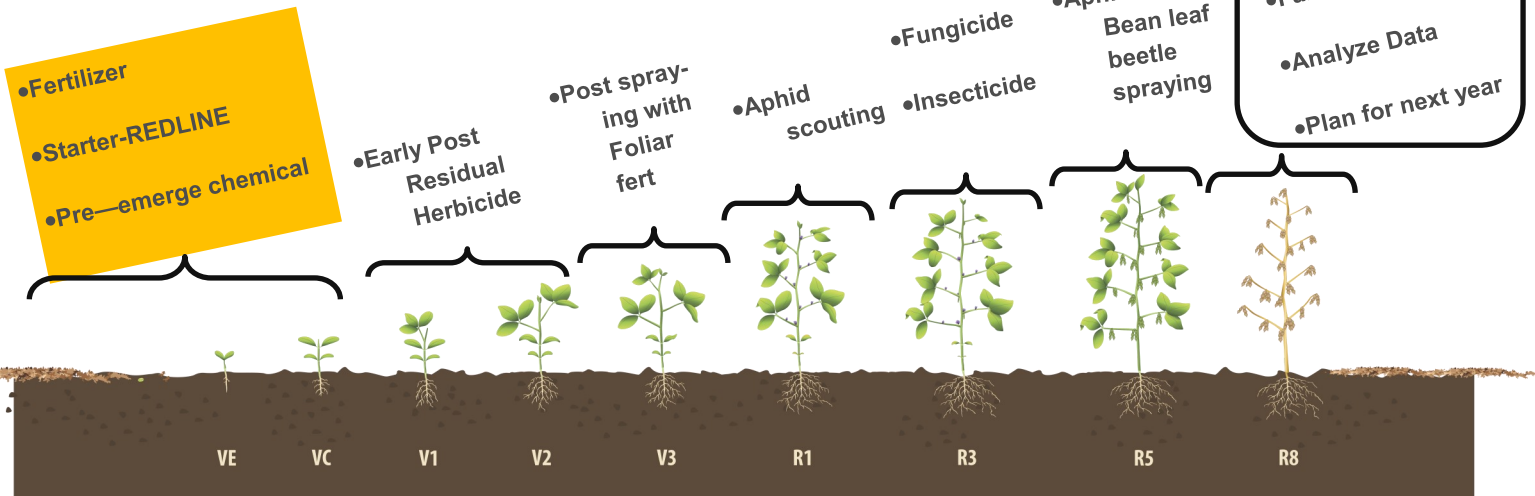
Target Rate (Count) (ksds/ac)

34.00 (34.30 ac)
32.00 ( 4.82 ac)
29.00 (25.11 ac)
28.00 (10.09 ac)
26.00 ( 5.70 ac)

Year : 2018	Total Amount : 2,472.1 ksds	Total Product Amount Used/Needed : 30.90 Bags
Operation : Planting Prescription	Avg. Rate : 30.98 ksds/ac	
Crop / Product : CORN	Min. Rate : 26.00 ksds/ac	
Area : 79.79 ac	Max. Rate : 34.00 ksds/ac	



## Bean Growth Chart





# Reasons to Get Your Meters Tested!

*By Tyler Doty*

- ◆ Skips and Doubles can have a major affect on yield.
  - ⇒ 1 skip = .8 of an ear
  - ⇒ 1 double = .4 of an ear
  - ⇒ Misplaced seed = .1 - .2 of an ear
  - ⇒ 1 ear in 1/1,000th of an acre (17 feet 5 inches on 30 inch rows) = 7 bushels
- ◆ Every 1% of singulation lost per row can have up to 2.5 bushel affect on yield
  - ◇ Finger meters should be at 98.5% singulation and up. One upgrade for these meters would be to get the Precision belts because they are cupped instead of flat. That will make sure the seed is dropped in the center instead of off to one side and could cause it to bounce around in the seed tube resulting in a skip or a double.
  - ◇ E-set meters should be at 99.5% singulation and up. These are your factory John Deere meters just upgraded with a few Precision parts to make them more consistent.
  - ◇ V-set Meters should be at 99.6% singulation and up. One benefit from v-set meters is you do not have to adjust for seed size.



Planting with skips and doubles



Near Picket fencing planting

*Valley Ag Supply's Next Syngenta Trip Is to...*

# CALIFORNIA ~ 2019

Don't miss out on fungicide yield benefits

**Warmerdam Farm &  
Cherries & Kiwi  
Carrots  
Dairy  
Yosemite**



---

*Trip Date: February 8-12, 2019*

Join us as we explore agriculture in central California and Yosemite National Park, world renowned for its vast beauty. Warmerdam's don't just grow the fruit; they also pack the fruit for export. Our trip includes delicious food, lovely accommodations, travel and we guarantee you'll learn something new.



*Need more information on qualifying?*

*Call our office 605-267-3100*

*Valley Ag Supply, Inc Gayville*



47261 SD Hwy 48  
Elk Point, SD 57025

## Did You Know...

When products are purchased from non-traditional retail channels including brokers or Farmers Business Network (FBN) type businesses, the customer is on his/her own to resolve any conflicts or program guidance offered. By using non-traditional retail channels, Syngenta (among other companies) have concerns about product integrity, stewardship and regulatory compliance. Brokers, including FBN, are not authorized retailers for Syngenta (or other chemical companies).

At Valley Ag, we help get a person's rebates for them and walk fields if there's a complaint. So it's something for customers to consider when looking at FBN's super cheap pricing, farmers are getting what they pay for ...zero service.

### Contact Us!

Valley Ag  
Supply-  
Gayville  
605-267-3100

Valley Ag  
Supply-  
Spink  
605-761-1001

Like us on  
Facebook

